

Nalin Girish

since 1967

IRON & STEEL COORDINATOR PAN INDIA

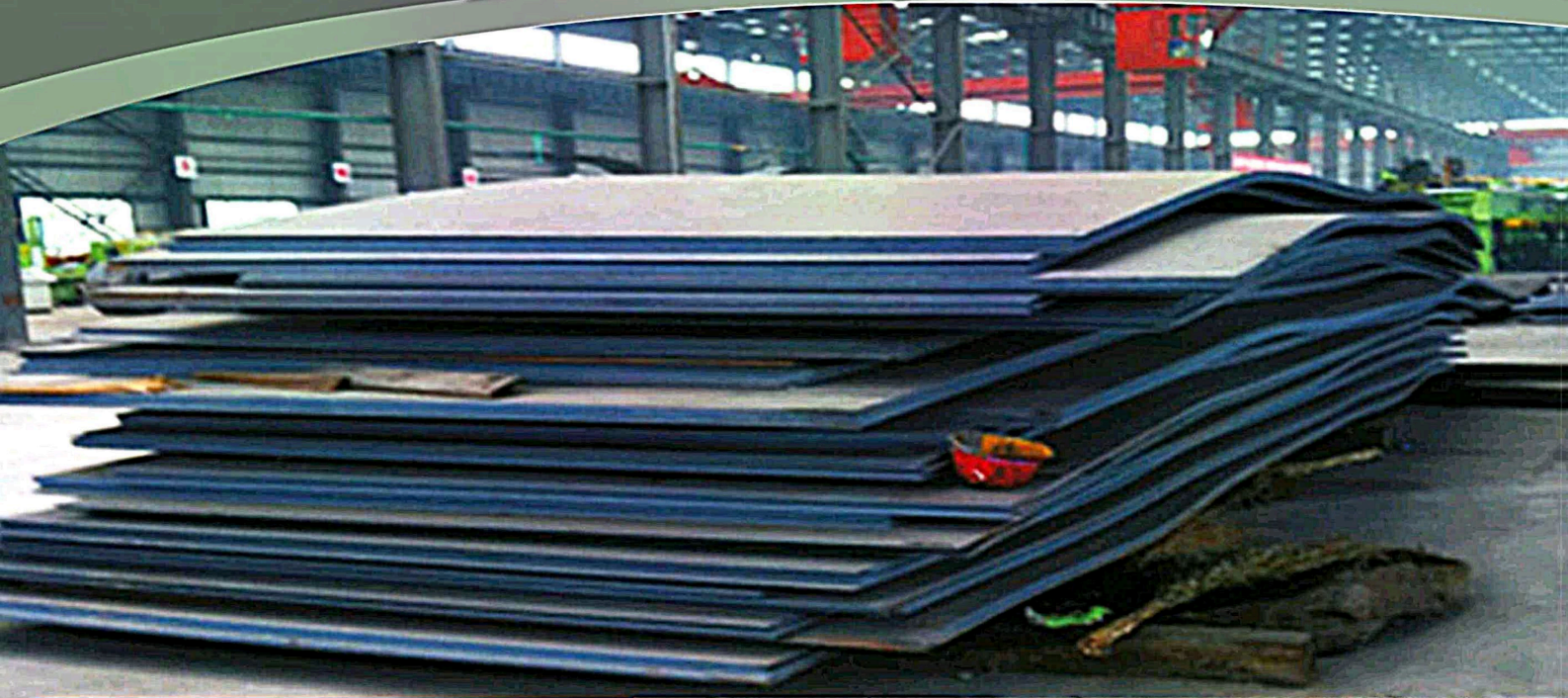
Divyesh Shah - 98201 27077


Keval Shah - 99305 27077

Piyush Shah - 85911 09119

Why Choose NALIN GIRISH ?

1. With Business Connect in more than 30 cities, which helps sourcing at best rates, region-wise, save on logistic costs & faster executions.
2. Specialization in Ferrous Metals, Expertise in handling Plates & HR Coils of multiple grades.



 022 3151 8314

 **85911 09107**

 **sales@nalingirish.com**

 **www.nalingirish.com**

Page no 1



GLIMPSE OF NALIN GIRISH

- ★ **NALIN GIRISH** has been in Iron and Steel Business since 1967 with very high reputation in Iron and Steel Business fraternity.
- ★ **Bombay Iron & Steel Broker's Association** (BIBA) which is more than 5 decades old and in which **NALINKANT G. SHAH** was **Hon. Secretary** for **36 years** and now **DIVYESH N. SHAH** is the **Committee Member** in same association.

SECRET BEHIND THE SUCCESS OF NALIN GIRISH

The cornerstone of Nalin Girish's success lies in its dedication to delivering top-notch quality and personalized service. Specializing in special-grade plates and HR coils, the company has become synonymous with precision and reliability. Through decades of building relationships, Nalin Girish has not only sustained its position but has also thrived, creating a legacy that continues to resonate across the Indian steel market. As Nalin Girish looks to the future, it remains steadfast in its commitment to excellence, forging a path of continued success in the dynamic arena of iron and steel industry.

WHY TRUST NALIN GIRISH?

For more than five decades, Nalin Girish has been an indomitable force in the realm of iron and steel Co-ordinator, carving a legacy steeped in experience, reliability, and unyielding commitment. The company stands as a stalwart presence, having weathered the tides of industry evolution with unwavering resilience.

NALIN GIRISH PRODUCT CATALOGUE

BOILER QUALITY PLATE

537 Class 1 & 2
283 GR.C / 285 GR.C
516 GR.60
516 GR.70
516 GR.60-70- Dual TC
2002 GR.1, 2 & 3
NACE MR 0103,
NACE MR 0175 + HIC
P265 GH

HIGH TENSILE

E350 A/BO/BR/C
E450/500/550/600
S450/500/550/600
A572 GR 50 & 60
S355JR, JO
S355J2+N
E410
S420

CORTEN STEEL

ASTM A588 GR.A/B
IRSM 41 & IRSM 44
S355J2W+N
Corten A/B
ASTM A606 - Type 4
A709-50W
Sailcor

EN - SERIES

EN 8
EN 9
EN 19
EN 24
EN 91

MILD STEEL

IS 2062 E 250
A/36
IS 2062 FE 410
IS 1079
S235
S275 JR

(BIG STEEL KEG)

BSK 46

**(DEAD SOFT
QUALITY)
DSQ PLATES**

HOT ROLLED COILS

IS 1079
IS 10748
IS 2062 E250
IS 2062 E350
IS 2062 E410
IS 2062 E450

LOW ALLOY STEEL PLATES

387 GR 2 CLASS 1 & 2
387 Gade 5 (P-5)
387 Gade 11 (P-11)
387 Gade 12 (P-12)
387 Gade 22 (P-22)
387 Gade 91 (P-91)
16M03
204 GR A/B

HIGH MANGANESE PLATES

Had field
X120MN12

HARD PLATES

UTTAM HARD
(Formerly known
as Evonith Hard)
SAIL HARD
JSPL HARD
TISCRAI

CHEQUERED PLATES

IS 2062
IS 3502

HIGH CARBON

C-45
C-50
C-55
C-60

AMERICAN PETROLEUM INSTITUTE (API) PLATES

API 5L X 42
API 5L X 52
API 5L X 60
API 5L X 70

WEAR RESISTANT PLATES

Brinell Hardness Number
(BHN)

400 BHN
450 BHN
500 BHN
700 BHN

HIGH-STRENGTH LOW-ALLOY STEEL

S315MC
S355MC
S420MC
S460MC
S500MC
S550MC
S650MC
E690TM
S700MC

WE ARE DEALING WITH

MAJOR STEEL MANUFACTURING COMPANIES OF INDIA :

AMNS

EVONITH

JSL

JSPL

JSW

NAMCO

NMDC

SAIL

SHAH ALLOY

SSL

TATA STEEL

Also dealing with following Countries :

CHINA ● INDONESIA ● JAPAN ● KOREA ● VIETNAM

VALUE PROPOSITION

Offering rates as per customers requirement for various kind of steel materials across different Geographical locations & it's execution once the orders are finalized as per **NGRFD** (Nalin Girish Reliable Fast Delivery) system.

OUR VISION & MISSION

- ★ Our Vision is to Create Sustainable Growth by balancing the use of Natural Resources with Social Development.
- ★ Our Mission is to build Tangible Value while being Socially And Enviromentally Responsible by conducting Our Business Operation with Accountability

For Details :



NalinGirish

Contact Us :

 **Corporate Office :**
Mahendra Industrial Premises,
3rd Floor, Unit No. 17, Near Sion Fort &
VVF Factory, Sion East,
Mumbai - 400 022. INDIA

 **Registered Office :**
421, Giriraj Building, S.T. Road,
Carnac Bunder, Mumbai 400 009. INDIA

Follow us on

 Nalin Girish

 nalin_Girish

 Nalin Girish

 @nalin_Girish

Locations we deal in :

IN INDIA : Ahmedabad, Bangalore, Baroda, Bhavnagar, Bhilai, Bokaro, Bhubaneswar, Chennai, Cochin, Coimbatore, Delhi, Faridabad, Ghaziabad, Gowahati, Haryana, Hubli, Hyderabad, Jaipur, Jodhpur, Kolkata, Mumbai, Nagpur, Pune, Raipur, Rajkot, Rourkela, Surat, Vishakhapatnam.

INTERNATIONAL : Dubai etc.

PRODUCT CATALOGUE

MILD STEEL IS 2062 E 250 A/36 IS 2062 FE 410 IS 1079 S235 S275 JR	HOT ROLLED COILS IS 1079 IS 10748 IS 2062 E250 IS 2062 E350 IS 2062 E410 IS 2062 E450	AMERICAN PETROLEUM INSTITUTE (API) PLATES API 5L X 42 API 5L X 52 API 5L X 60 API 5L X 70	EN - SERIES EN 8 EN 9 EN 19 EN 24 EN 91	HIGH TENSILE E350 A/BO/BR/C E450/500/550/600 S450/500/550/600 A572 GR 50 & 60 S355JR, JO S355J2+N E410 S420	NEWLY INTRODUCE 28MnB5 used in Agricultural, Forestry & Excavator
LOW ALLOY STEEL PLATES 387 GR 2 CLASS 1 & 2 387 Gade 5 (P-5) 387 Gade 11 (P-11) 387 Gade 12 (P-12) 387 Gade 22 (P-22) 387 Gade 91 (P-91) 16M03 204 GR A/B	HIGH MANGANESE PLATES Had field X120MN12	(BIG STEEL KEG) BSK 46 (DEAD SOFT QUALITY) DSQ PLATES	CORTEN STEEL ASTM A588 GR.A/B IRSM 41 & IRSM 44 S355J2W+N Corten A/B ASTM A606 - Type 4 A709-50W Sailcor	HARD PLATES UTTAM HARD (Formerly known as Evonith Hard) SAIL HARD JSPL HARD TISCRAI	STAINLESS STEEL GRADE SAE 304 SAE 304 L SAE 316 SAE 316 L
CHEQUERED PLATES IS 2062 IS 3502	BOILER QUALITY PLATE 537 Class 1 & 2 283 GR.C / 285 GR.C 516 GR.60 516 GR.70 516 GR.60-70- Dual TC 2002 GR.1, 2 & 3 NACE MR 0103, NACE MR 0175 + HIC P265 GH	HIGH CARBON C-45 C-50 C-55 C-60	WEAR RESISTANT PLATES Brinell Hardness Number (BHN) 400 BHN 450 BHN 500 BHN 700 BHN	HIGH-STRENGTH LOW-ALLOY STEEL S315MC S355MC S420MC S460MC S500MC S550MC S650MC E690TM S700MC	TITANIUM ASTM B265- 15

ALL TATA Grade AVAILABLE IN PAN INDIA

**HR 46 (THIN)
BSK 46**
3mm - 8mm

E 250 -
1.6mm to 16mm

E-41
1.2mm to 12mm

E 350 A/BR/C
1.6mm to 12mm

E 450
5mm to 12mm

**Corten A,
IRSM-41**
2mm to 12mm

WIDTH
1250mm TO 2000mm

**S355 MC TO
HS700 MC**
3mm to 10mm

E 34 Grade
2.5mm to 12mm

TISCRAL
5mm to 12mm

**10748 Gr
1/2/3/4**

SAPH 44
2.5mm - 12mm

1.6mm to
6mm



**Nalin
Girish**
since 1967

SPECIALIST IN IRON AND STEEL RAILWAY BODY

**IRSM 41, S355J2W +N, Corten A/B, ASTM A242,
A588, A606-4, A709-50W, Sailcore.**

INDENTING AGENT:

**PAN INDIA, EUROPE & GULF
COUNTRIES.**

DIVYESH N SHAH +91 98201 27077

Email:- sales@nalingirish.com

Web:- www.nalingirish.com

**Corporate Office:- 17, Mahendra Industrial Estate, 3rd Floor,
Near Vvf Ltd. & Sion Fort Sion (E) Mumbai 400 022.**

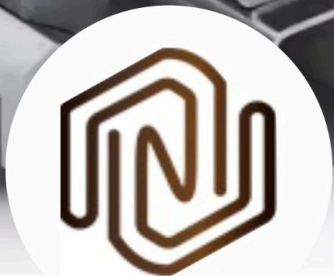
Tel:- 022 2401 0591 / 92





Nalin Girish

since 1967



We are Happy to
Announce
that we have started
**Corten Steel Pipe &
Tubes Pan India**



CONTACT

DIVYESH SHAH : 98201 27077

HETVI GALA : 85911 09117



sales@nalingirish.com



www.nalingirish.com



[8591109114](https://wa.me/8591109114)



**AVAILABLE IN MUMBAI –
READY STOCK!**



ALLOY STEEL PLATE ASTM A 387

Thickness **5mm to 80mm**

- ✓ **GRADE 5**
- ✓ **GRADE 9**
- ✓ **GRADE 11**
- ✓ **GRADE 22**

Available Make: AMNS | JSPL | SAIL | Evonith | Acroni

Applications:

- Oil & Gas / Petrochemical
- Power Generation
- Chemical Processing
- Pulp & Paper
- Shipbuilding & Offshore



NAVI MUMBAI WAREHOUSE |



IMMEDIATE DELIVERY |



MILL TC AVAILABLE

👉 **LET US KNOW YOUR REQUIREMENTS!**

NALIN GIRISH ISPAT LLP

IRON & STEEL CO-ORDINATOR

📞 Divyesh N Shah: +91 9820127077

📞 Keval Shah: +91 9930527077

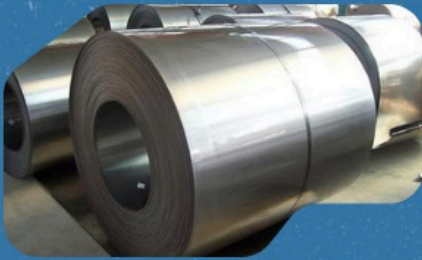
📞 Office: 8591109107

🌐 www.nalingirish.com

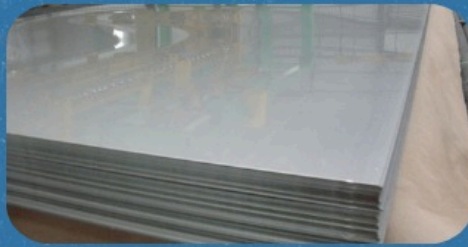
✉ sales@nalingirish.com



Nalin
Girish
since 1967



CRCA Steel Coils sheet



HRPO Coils and sheets



GP / GI Coil



HR Coils and sheets



Chequered Coils and sheet



PPGI Coils

SERVING THE IRON AND STEEL INDUSTRY WITH EXCELLENCE
AND INTEGRITY FOR 58 YEARS.

PAN INDIA SERVICE

CALL NOW

+91 85911 09114 - PARTH MEHTA



022 3151 8314

sales@nalingirish.com

www.nalingirish.com



Nalin
Girish
since 1967

Iron & steel Co-ordinator

Why Choose Us

Our Services

- Working in 30 Major Cities of India which will help you Save Transport Cost & Time
- We Cover all Ferrous Grade of Plates , Coil , Structural & Rails
- Fast & Best Rates

CALL NOW

Landline

+022 3151 8314

MUMBAI INQ

Ramesh Kumar

+91 85911 09115

OUT STATION INQ

Meet Shah

+91 85911 09116

sales@nalingirish.com
www.nalingirish.com

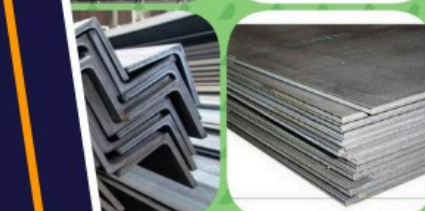


Photo Credit

BIG ANNOUNCEMENT!

**WE ARE EXCITED TO INTRODUCE IN
RAIL, PLATES & HR COIL and STRUCTURE OF E350 GRADES
PAN INDIA MORE THEN 30 CITIES**

OUR SPECIAL GRADE OFFERING

- ✓ E250 , E350 & E450 (A , BR , BO & C) With Cu (Copper Grade)
- ✓ B.Q With NACE+ HIC
- ✓ DSQ (Dead Soft Quality)
- ✓ Corten Sheet & Tube S355J2W+N , 588 Gr A/B
- ✓ E34
- ✓ 28MnB5, 30MnB5
- ✓ High Manganese (11% to 14%Mn)
- ✓ High Yield Strength Plates Between (400 to 900 YS)
- ✓ BSK 46 , HR 46

NON-FERROUS METAL

PLATES , SHEETS , PIPES & TUBES

Duplex & Super Duplex

Stainless Steel

Titanium

Hastalloy & Monel

Heat Exchanger Tube

Instrumentation Tube

Hollow Tube

Copper Nickle Tubes

Oil Country Tubuler

Contact Us : DIVYESH SHAH  98201 27077



**Nalin
Girish**

since 1967

IRON & STEEL COORDINATOR PAN INDIA